

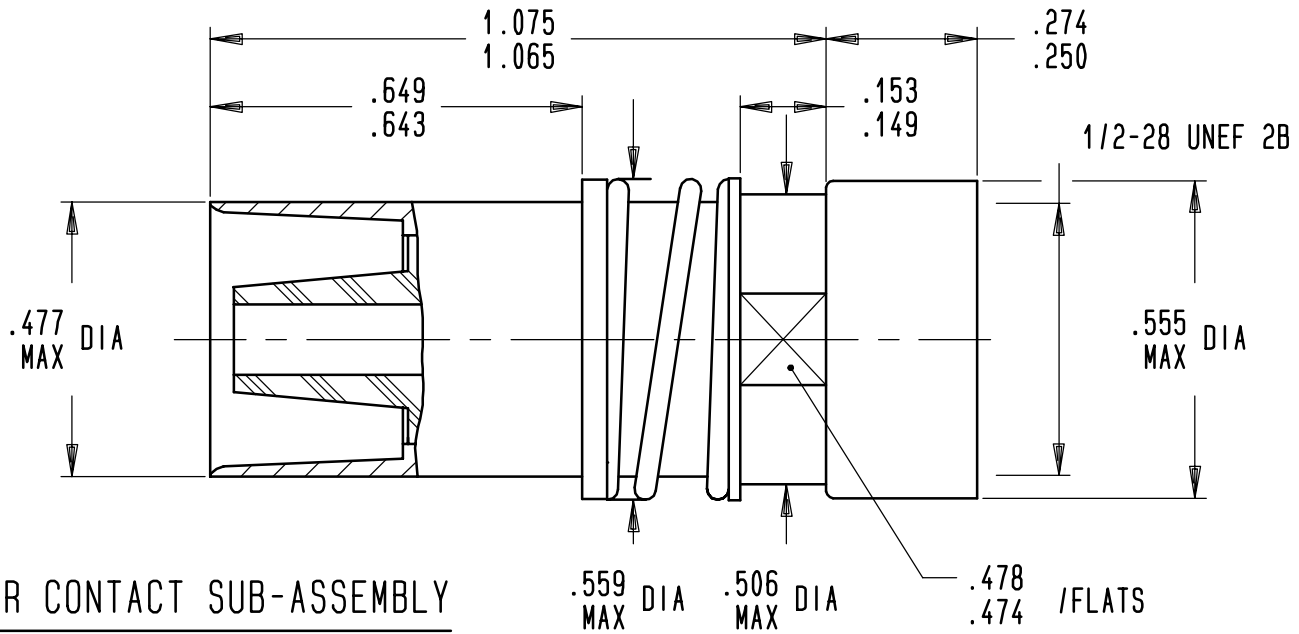


Series  
NSX

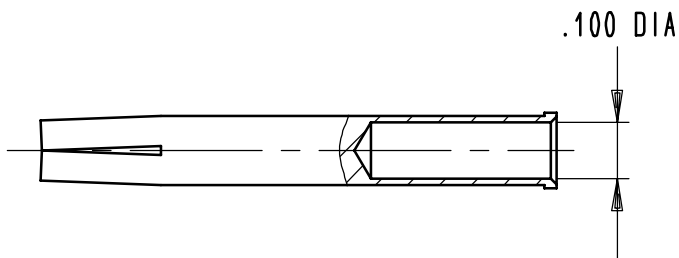
T-CAS - SIZE 1 RF CONTACT  
ASNE 0406 WD AND ECS 311201 CABLE  
CRIMP TERMINAISON

Issue:  
22 NOV 96

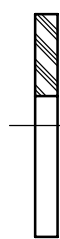
Page  
1 / 1



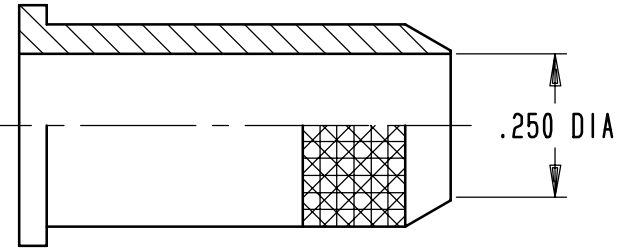
OUTER CONTACT SUB-ASSEMBLY



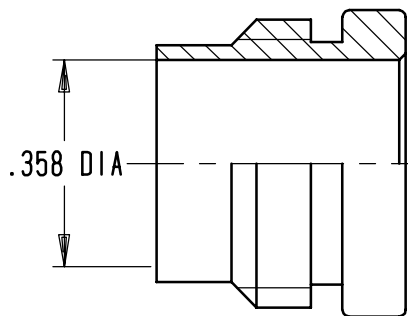
CENTER SOCKET CONTACT



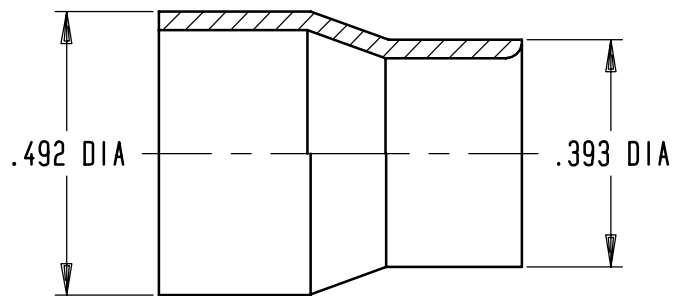
DIELECTRIC WASHER



CRIMP SLEEVE



CLAMP NUT



FERRULE

MATERIAL AND FINISH

CONTACT PARTS : COPPER ALLOY - .00005 INCH OF GOLD OVER NICKEL  
SPRING : STAINLESS STEEL  
C.CLIP : STEEL - NICKEL PLATED  
WASHER : STAINLESS STEEL - PASSIVATED  
DIELECTRIC AND DIELECTRIC WASHER : TEFLON

WIRING INSTRUCTIONS : RP 6176

4112-9610

CREATION				
PEN: .				
NOM: FALETTI				
DATE: 29 NOV 89				
APPR.: .	22 NOV 96	REDRAWN	VALGRESY	.
	Issue	Revisions	Name	Approved